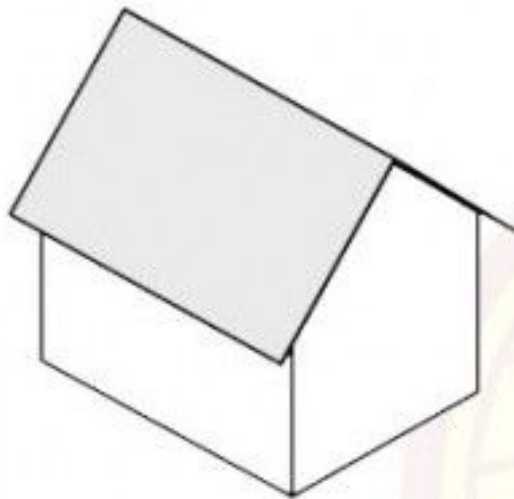


What Style is it?

Residential Styles of the Pacific Northwest

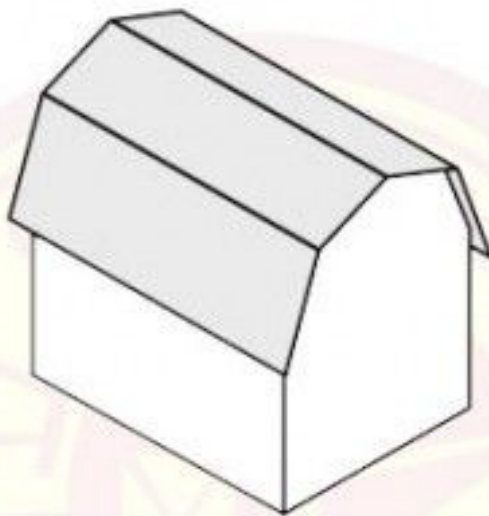


*Created and
Presented by:
Eric Wheeler*



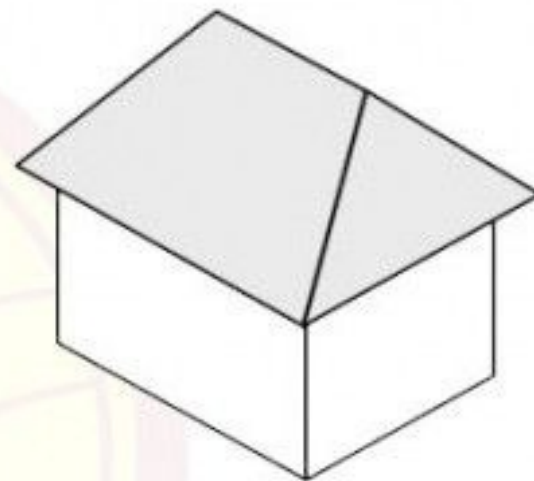
Gable Roof

The gable roof is made up of two right triangles and slopes on two sides.



Gambrel Roof

Gambrel roofs have a double slope on each side and are often what most people picture as barn roofs. The advantage to a gambrel roof is the space directly under the roof is larger which makes more room for storage.



Hip Roof

A hip roof is a slightly more dynamic roof with four slopes. Four hip rafters brace the roof making it sturdier, and more difficult to construct, than a gable roof

Historic Period in Portland 1870s to mid 20th Century



RESIDENCE OF W.S.LADD ESQ



Italianate 1870-1890

- Low Pitch Hip Roofs
- Tall Narrow Windows
- Paired Brackets
- Based on Italian Villas





Romanesque Revival 1880-1900



- Heavy Stone Massing
- Round Arches
- Turrets/Towers
- Medieval Castle

Queen Anne

1890- 1910

- Asymmetrical/Grandiose
- Multiple Gables
- Towers/Turrets
- Wrap-Around Porches











Queen Anne Duplex



Queen Anne Cottage



Colonial Revival

- Symmetry/Balance/Order
- Central Entry/Flanking Windows
- Classical Architectural Features
- Reflects American Colonial Heritage



Pedimented Portico:
Fluted columns
Entablature
Tryglyphs and Metopes
Modillions







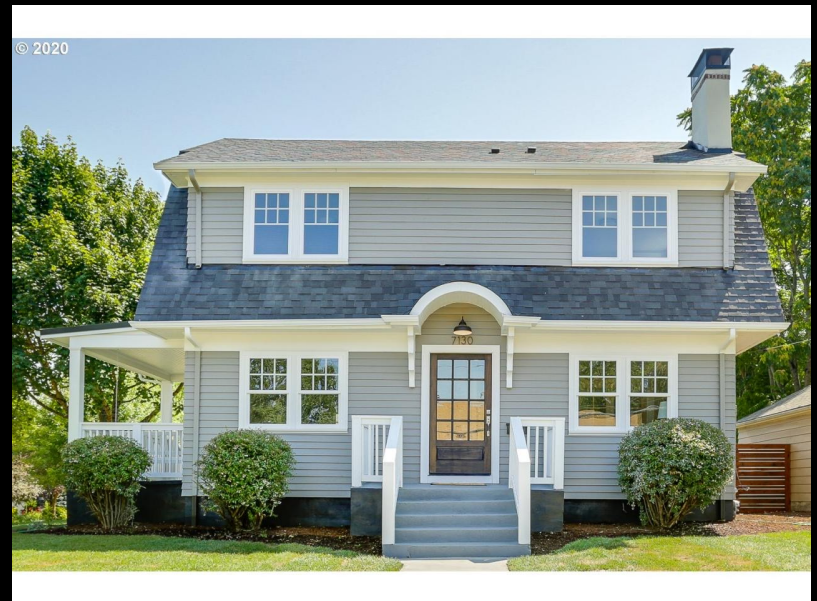






Dutch Colonial

- Gambrel roof w/large dormer
- Common variation of Colonial



Arts and Crafts Movement 1905 - 1930



Craftsman Bungalow

- One story with attic
- Horizontal Emphasis
- Designed for High Density
- Simplicity, Utility and Beauty









Portland Bungalow

© 2020



Craftsman

- Front or Side gabled
- Exposed Rafter Tails/Beams
- “Plan Book” Designs
- More than one story



© 2020



© 2020





American Four Square

- Cubic/square façade/footprint
- Standard 4 rooms to a floor
- Hipped roof/w central dormer
- Either Craftsman or Colonial











Period Revival Styles 1920 - 1930



Tudor Revival

- Steeplly Pitched Roof, with Front Facing Gables
- Mock Half-Timbering
- Stucco with brick
- Asymmetry





© 2020







English Cottage

- Evokes English Countryside
- Faux Thatched Roofs (Rolled)
- Stucco or Brick Exteriors
- Multi-Light Windows



Storybook



Mediterranean/Spanish Colonial Revival

- Red Tile Roof
- Brick or Stucco Exterior
- Flush Eaves
- Stepped Parapets



© 2020



Mission Revival





© 2015



The Portland Tradesman



Cape Cod late 1930s – early 1950s

- 1 – 1 ½ Stories
- Symmetrical Plan
- Classical details surround entry
- Side Gabled roofs
- Relative of the Colonial Revival



© 2020





Mid Century Modern 1950 – c.1975



Mid-Century Modern design elements

- Horizontality
- Projecting Beams
- Clerestory Windows
- Shed Roofs
- Emphasis on Automobile



Ranch

- Rambling horizontal look
- Low Pitch Hip or Gable Roof
- Picture Windows
- Frequent use of Roman Brick





© 2020





Northwest Regional

- Rural and Japanese Influences
- Low Pitched Roofs
- Vaulted Ceilings
- Ribbon Windows or Walls of Glass
- Unpainted and Exposed Wood
- Blends with Landscape





Eric Wheeler - Historian/Tour Guide

ericwheeler2@gmail.com

www.positivelypnw.com

Positively PNW Walking Tours on Instagram and Facebook

© 2015



