

Auto-centric Astoria (1920-1960)



Presented by
Eric Wheeler
for

LOWER COLUMBIA
PRESERVATION
S.O.C.I.E.T.Y



LOWER COLUMBIA
PRESERVATION
S.O.C.I.E.T.Y

Learn all about Astoria's
once auto-centric
downtown!

WALKING TOUR of ASTORIA

*Auto Showrooms
&
Service Stations*



Sunday October 16th

Meet at the LCPS office at **10am**
389 12th Street

Hosted by LCPS volunteer and
tour guide, Eric Wheeler

estimated walk time 2 hrs

www.lcpsociety.org

Themes:

- 1- Car ownership
- 2- Astoria Isolation
- 3- Adaptive Re-use

 **Tour Stops**
 **Photos**

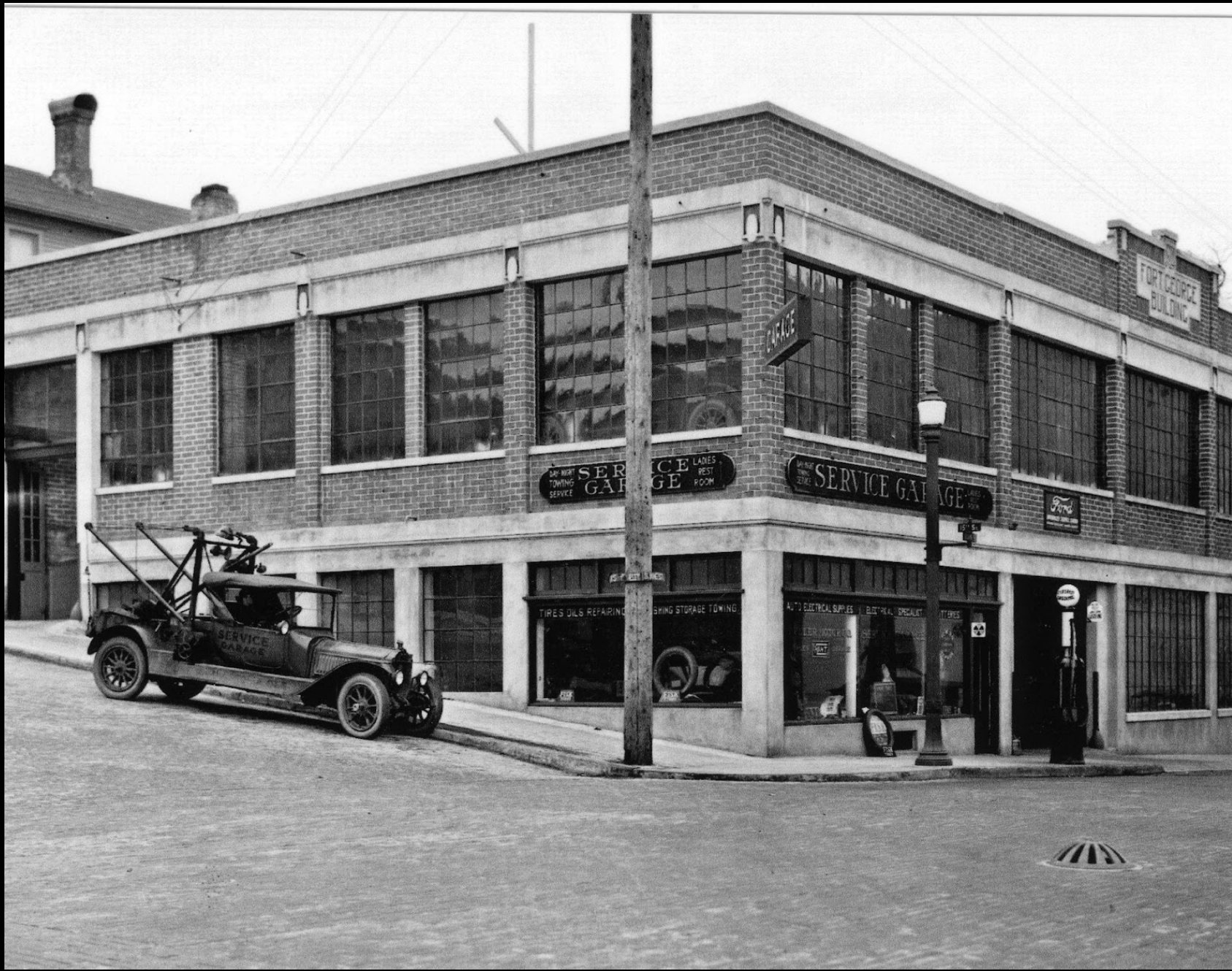


Astoria Automobile History Timeline

- 1902 - First Automobile in Astoria – Ferdinand Fisher
- 1913 – First Auto Dealership in Astoria - Lovell Auto
- 1916 – Highway 30 from Portland to Astoria completed
- 1921 – Regular car ferry service from Megler to Astoria
- 1921 – Old Youngs Bay Bridge built – Business Hwy 101
- 1922 – Great Fire destroys downtown – rebuilt in 3 years
- 1925 – Lewis and Clark Bridge replaces 1910 bridge
- 1941 – Fortune magazine article - Astoria auto sales
- 1946 – Three new dealerships designed by Eino Issacson
- 1964 – New Youngs Bay Bridge built – Highway 101
- 1966 – Astoria-Megler Bridge opens and replaces ferry



Fort George Building (1924)
NE corner of 15th and Duane
John Wicks - architect



Fort George Building (c.1924)



Fort George Building (1958)



Lovell Showroom (1920)
NW corner of 14th and Duane
Charles Diamond - architect

565 Duane Street
(Southeast corner of 14th and Duane)

c. 1923



Lovell Auto Company (post Great Fire)



Heritage Square today
Parking, Garden of Surging Waves, American Legion Hall



SW corner of Heritage Square – 12th and Exchange



Heritage Square today
Parking, Garden of Surging Waves, American Legion Hall



Duane Street between 11th and 12th – Automobile Row



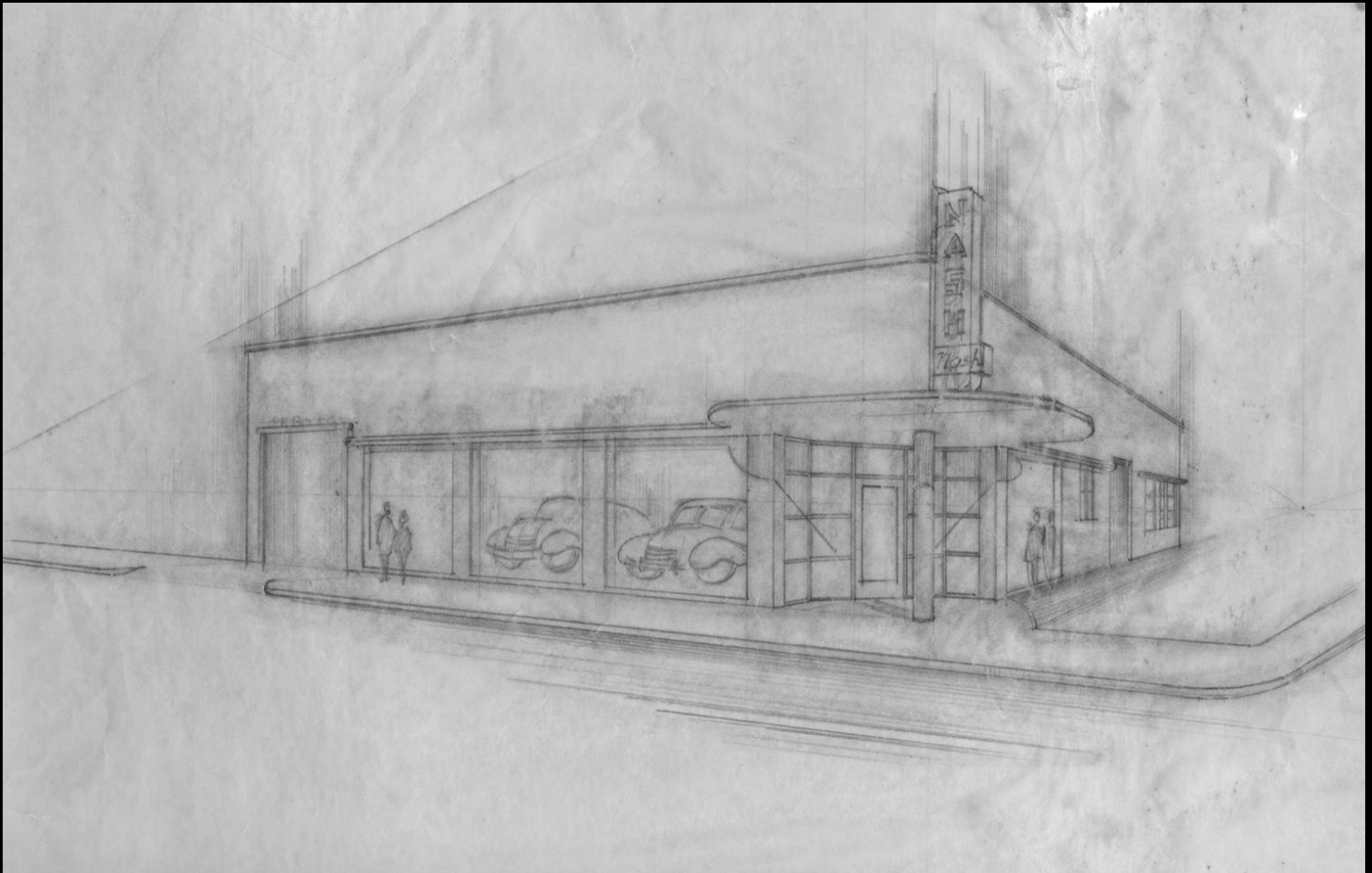
Astoria Senior Center - NE corner of 11th and Exchange

20-20-20
CENTER

NO PARKING
IN FRONT OF
BUSINESS
OR PROFESSIONAL
OFFICES
EXCEPT FOR
LOADING AND
UNLOADING
ONLY

FOC





Nash Auto Dealership (1946)
Eino Issacson- architect



Food Carts!



Mobil Gas/Service Station (c.1960)
SE corner of 11th and Duane Street



HOTEL ELLIOTT

Columbia Bank

11th St





FILM

KODAK SAFETY FILM

KODAK SAFETY FILM

Duane Street between 11th and 12th – looking East – 1956



Astoria Bistro/Cargo – NE corner of 11th and Marine Drive



Late 1930s



Maki Building (1946)
Marine Drive between 12th and 14th
Eino Issacson - Architect



Hurricane Ron's seafood restaurant



NE corner of 14th and Marine Dr (mid-1950s)



Pet Works – NW corner of 14th and Marine Drive

IMODORE
HOTEL

OREGON GYPSY
GALLERY

LOCALLY MADE ART & GIFTS
Oregon Gypsy
open

GRATEFUL RAIN
Essential Oil Bar & Apothecary Vintage Instruments Middle Eastern Food Market





Chrysler-Plymouth Dealership (1946)



Commodore Hotel/Street Fourteen Café
SW corner of 14th and Commercial



Pop-up auto showroom (c.1941)





REACH BREAK BREWING

open

BREWERY PATIO

REACH

A FISH COMPANY
SUPPORTING FRESH AND
LOCAL FISHERIES
SUSTAINABLE HARVEST

WAHOO CHARLIE'S

WAHOO CHARLIE'S

WAHOO CHARLIE'S

LOADING ZONE
NO PEDESTRIANS

SEMI



Bob Lovell Used Cars
(c.1955)
13th Street between Duane
and Exchange Streets



Gymnastics Studio – NW corner of 16th and Exchange



McCroskey Building (1923)
Johnson Motor Company (1931-1979)
and later Lum's Auto



Rambeau Motors (1946)
Eino Issacson – architect
Lower Columbia Bowl since mid-1950s



Sovey Motor Company (1923)
Duane between 12th and 14th



Clatsop Motor Company (1926)
SE corner of Duane and 16th
John Wicks - architect



14th Street – Looking south – December 1922



Commercial Street – looking east



Commercial Street – looking west

Thanks!

Special Thanks to:

Lower Columbia Preservation Society staff
Rachel Jensen and Jaime Lump

Photo Credits:

Sara's Old Photos - Astoria
Oregon Historical Society
Peace First Lutheran Archive – Astoria
Clatsop County Historical Society

Upcoming LCPS programs:
TOPICS IN PRESERVATION – 3RD Wednesday